



IKECHO

AUSTRALIA

2020 Product Catalogue

3 SOUTH SEA

Australian South Sea Pearls are famous all over the world because of their exceptional lustre and amazing iridescent white to creamy colours.

13 TAHITIAN

Also known as "Black South Sea Pearls" and are the most celebrated natural black pearls found in the world.

19 AKOYA

Akoya Pearls are considered the classic cultured pearl. Akoya oysters rarely produce more than 2 pearls per harvest.

21 MABE

Mabe pearls are half round or dome shaped pearls grown on the inside of the oyster.

26 FRESHWATER

Freshwater Pearls are the most common type of pearl. They come in an array of colours which is a big advantage over saltwater varieties and it makes them highly versatile for jewellery.

45 BAMBINI

Freshwater Pearl designs especially for the young ones.

47 FWP EDISON

Freshwater Edisons Pearls are cultivated similar to Akoya & South Sea by inserting one bead into the mussel tissue of the oyster.

62 OPALS

Opal is one of the most unique gem stones in the world and is classified at the National Gemstone of Australia.



ABOUT US

Ikecho Australia (pronounced i-ket-cho) is an Australian brand of the world's finest quality pearls and opals since 1999. Ikecho prides itself on creating exciting and contemporary pearl designs, which follow the world's trends and fashion movements.

The name Ikecho was chosen as it is believed it was the first freshwater mussel used to cultivate pearls in Japan; Erica wanted her company to be thought of as the home of freshwater pearls in Australia. The Ikecho team have a fresh and enthusiastic approach to their work and have a tremendous passion for changing the stereotypical view of pearls.

Ikecho was also the first pearl company to import natural pink pearls to Australia. The Edison Collection continues to be our best selling collection due to likeness to south sea pearls without the expensive price tag.

In the late 2017, Ikecho has started incorporating Opals in their range and supplies Solid Boulder and Black Opal jewellery which are sourced from Erica's father's mines in Winton, QLD and Lightning Ridge, NSW.

Ikecho has also released beautiful designs incorporating Solid Australian Opal with Australian South Sea Pearls. It is impossible to find two opals that are the same which makes these pieces extra special and unique.

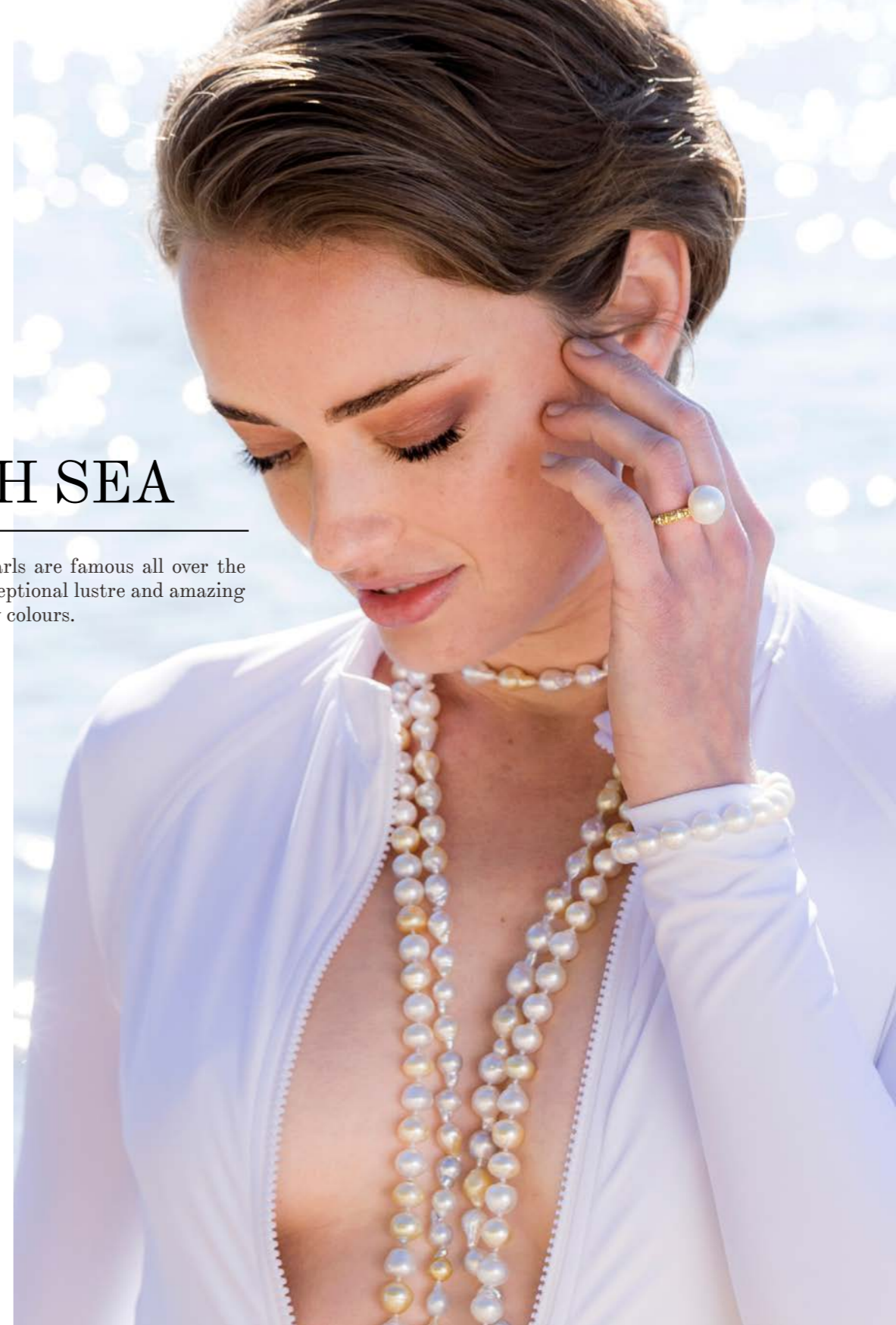
In the late 2019, Ikecho introduced the Bambini Collection which caters for the young ones which includes stud earrings, bracelets and strands available in sterling silver. The collection was inspired by Erica's daughter, Charlize - little girls love wearing pearls!

OUR STOCKIST

Ikecho Pearls currently enlists over 195 premium branded stockists who proudly showcase a range of our jewellery in store. For a complete listing, simply visit ikecho.com.au or if you would like to become a Branded Stockist, please contact your local representative or call our head office.

SOUTH SEA

Australian South Sea Pearls are famous all over the world because of their exceptional lustre and amazing iridescent white to creamy colours.



- The Australian South Sea pearl oyster (*Pinctada maxima*) is the largest and rarest of all pearl oysters and produces the largest and most valuable pearls in the world

- The South Sea pearl oyster is bead-nucleated and is cultured in saltwater along the northwest coast of Australia. Pearls of the golden variety are also produced primarily in the Philippines and Indonesia

- White South Sea pearls generally retain the highest value of all pearl types of pearls because of their large size range and unique luster quality

- Silver-lipped South Sea pearl oysters generally produce pearls in the white, silver, aqua and blue family of overtones. The gold-lipped variety produces the cream, champagne, and deeper golden variety.

- South Sea pearls can be found in the range of 8 to 20 mm, with the average being 12 mm. Although extremely rare, some pearls have been found larger than 20 mm.



IP52-EWS10/PWS12

18ct wg drop 10mm Broome South Sea diamond earrings 0.20ct and 12mm drop enhancer 0.16ct



IP118-EWS12/PWS13

18ct wg drop 12mm Broome South Sea drop diamond star earrings 0.20ct and 13mm drop pendant 0.10ct



IP087-EWS11/PWS11

18ct wg round 11mm Broome South Sea earrings 0.33ct and 11mm round pendant 0.20ct



IP405-EWS13

18ct wg round 13mm Broome South Sea earrings 0.24ct



IP779-EWS12

18ct wg drop 12mm Broome South Sea diamond earrings 0.32ct



IP406-EWS11

18ct wg drop 11mm Broome South Sea diamond earrings 0.42ct



IP130-EWS11/IP166-PWS12

18ct wg drop 11mm Broome South Sea diamond earrings 0.25ct & 12mm drop pendant 0.08ct



IP526-EWS10/PWS12

18ct wg drop 10mm Broome South Sea diamond earrings 0.12ct & 12mm drop enhancer 0.12ct



IP111-9EWS11/9PWS13

9ct wg South Sea drop 11mm diamond hook earrings 0.04ct & 13mm enhancer dia 0.05ct



IP226-9EWS9

9ct wg drop 9mm Broome South Sea diamond earrings 0.03ct



IP174-EWS11

18ct wg drop 11mm Broome South Sea wide pave diamond earrings 0.15ct



IP011-EWS10

18ct wg drop 10mm Broome South Sea diamond earrings 0.10ct



IP136-EWS10

18ct wg drop 10mm Broome South Sea diamond earrings 0.06ct



IP764-EWS12

18ct wg drop 12mm Broome South Sea diamond earrings 0.31ct



IP625-EWS12

18ct wg round 12-13mm Broome South Sea diamond earrings 0.56ct



IP30-EWS10

18ct wg drop Broome South Sea 10mm diamond huggy earrings 0.12ct



IP622-EWS11

18ct wg drop 11mm South Sea diamond earrings 0.29ct



IP624-EWS11

18ct wg drop 11mm Broome South Sea diamond earrings 0.45ct



IP070-EYS10/PYS11

18ct yg round 10mm Broome South Sea earrings 0.22ct and 11mm round pendant 0.10ct



IP1002-EYS11/PYS12

18ct yg round 11mm Broome South Sea earrings and 12mm round pendant



IP111-9EYS11/PYS13

9ct yg drop 11mm Broome South Sea shepherd hook diamond earrings 0.04ct and 13mm diamond enhancer 0.05ct



IP178-EYS11

18ct yg drop 11mm Broome South Sea huggy earrings



IP30-EYS10

18ct yg drop 10mm Broome South Sea pave diamond huggy earrings 0.12ct



IP34-EYS11

18ct yg drop 11mm Broome South Sea diamond large huggy earrings 0.13ct



IP767-EYS12

9ct yg round 12mm Broome South Sea short plain hook earrings



IP102-EYS11

18ct yg drop 11mm Broome South Sea shepherd hook earrings



IP106-EYS10

18ct yg drop 10mm Broome South Sea shepherd hook earrings



IP050-EYS10

18ct yg round 10mm Broome South Sea round diamond stud earrings 0.10ct



IP226-9EYS9

9ct yg drop 9mm Broome South Sea diamond earrings 0.03ct



IP222-PYS13

18ct yg drop 13mm Broome South Sea enhancer



IP175-EYS12

18ct yg drop 12mm Broome South Sea polished stud earrings



IP901-EYS10

18ct yg drop 10mm Broome South Sea diamond earrings 0.08ct



IP144-EYS10

18ct yg drop 10mm Broome South Sea shepherd hook earrings



IP061-PYS12

18ct yg drop 12mm Broome South Sea pendant



IP063-PYS13

18ct yg drop 13mm Broome South Sea pendant



IP259-PYS10

18ct yg drop 10mm Broome South Sea pendant



IP068-PYS13

18ct yg 13mm drop Broome South Sea enhancer



IP1006-PYS9

18ct yg drop 9mm Broome South Sea diamond pendant 0.04ct



IP012-PYS13

18ct yg drop 13mm Broome South Sea enhancer



IP779-PWS14

18ct wg drop 14mm Broome South Sea diamond pave pendant 0.23ct



IP518-PWS13

18ct wg drop 13mm Broome South Sea diamond pendant 0.39ct



IP619-PWS13

18ct wg drop 13mm Broome South Seadiamond pendant 0.20ct



IP260-PYS13

18ct yg drop 13mm Broome South Sea pendant



IP187-PYS11

18ct yg drop 11mm Broome South Sea pendant



IP500-9YGD-S11

9ct yg white round 11.5-12mm Broome South Sea basket adjustable necklace 50, 60, 70cm with diamond 0.066ct



IP404-PWS13

18ct wg drop 13mm Broome South Sea diamond enhancer 0.18ct



IP028-PWS13

18ct wg drop 13mm Broome South Sea diamond pave enhancer 0.035ct



IP907-PWS12

18ct wg drop 12mm Broome South Sea diamond pendant 0.164ct



IP241-9PYS11

9ct yg 11mm drop Broome South Sea pendant



IP010-PYS13

18ct yg drop 13mm Broome South Sea diamond enhancer 0.05ct



IP138-9PYS13

9ct yg Broome South Sea 13mm drop enhancer



IP138-9PWS13

9ct wg 13mm drop Broome South Sea enhancer



IP241-PWS11

18ct wg 11mm drop Broome South Sea pendant



IP010-PWS13

18ct wg 13mm drop Broome South Sea diamond enhancer 0.05ct



IP1005-RWS9

18ct wg round 9mm Broome South Sea diamond ring 0.04ct



R008-RWS13

18ct wg button 13mm Broome South Sea ring



IP770-RWS13

18ct wg round 13mm Broome South Sea diamond ring 0.076ct



IP8383-RYS11

18ct yg near round 11mm Broome South Sea diamond ring 0.21ct



IP1143-RYS9

18ct yg white & natural gold 9mm Broome South Sea diamond ring 0.04ct



IP255-RYS9

18ct yg round 9mm Broome South Sea diamond ring 0.10ct



IP631-RWS12

18ct wg round 12mm Broome South Sea diamond ring 0.55ct



IP4439-RWS10

18ct wg round 10mm Broome South Sea diamond ring 0.115ct



IP778-RWS10

18ct wg round 10mm Broome South Sea diamond ring 0.312ct



IP266-9RYS10

9ct yg white button 10mm Broome South Sea ring



IP770-RYS13

18ct yg button 13mm Broome South Sea diamond ring 0.076ct



IP777-RYS11

18ct yg round 11mm Broome South Sea diamond ring 0.20ct



IP7876-RWS14

18ct wg baroque 14mm Broome South Sea diamond ring 0.285ct



IP1143-RWT9

18ct wg round 9mm Broome South Sea/Tahitian diamond ring 0.04ct



IP633-RWS11

18ct wg round 11mm Broome South Sea diamond ring 0.51ct



IP769-RYS10

18ct yg round 10mm Broome South Sea diamond ring 0.24ct



IP620-RYS10

18ct yg round 10mm Broome South Sea ring



IP776-RYS11

18ct yg 11mm round Broome South Sea diamond ring 0.25ct

BROOME SOUTH SEA SAPPHIRE COLLECTION



IP633-PWSB13

18ct wg 13mm drop South Sea black sapphire enhancer 0.29ct



IP633-PWSY13

18ct wg 13mm drop South Sea yellow sapphire enhancer 0.29ct



IP633-PWSP13

18ct wg 13mm drop South Sea pink sapphire enhancer 0.29ct



IP633-RWSB12

18ct wg South Sea button 12mm black sapphire ring 0.31ct



IP633-RWSY12

18ct wg South Sea button 12mm yellow sapphire ring 0.31ct



IP633-RWSP12

18ct wg South Sea button 12mm yellow sapphire ring 0.31ct

TAHITIAN

Also known as “Black South Sea Pearls” and are the most celebrated natural black pearls found in the world.



- Tahitian South Sea pearls are considered to be the second most valuable commercially farmed pearls in the world.

- Tahitian pearls are bead-nucleated and cultured in saltwater, produced by the Pinctada Margaritifera oyster, which is found exclusively in Tahiti and several other French Polynesian islands.

- Tahitian pearls are bead-nucleated, typically with a thick nacre. The thinnest nacre allowed by French Polynesian law for export is 0.8 mm

- Tahitian pearls are cherished for their incredibly exotic colors and mirror-like luster, they consist of hundreds of natural overtones such as peacock green, silver grey, peacock and deep black.

- Tahitian pearls are among the largest pearls in the world, ranging in size from approximately 8 mm to 18 mm.



IP087-EWT10/PWT10

18ct wg round 10mm Tahitian diamond earrings 0.33ct and pendant 0.20ct



IP1002-EWT10/PWT10

18ct wg round 10mm Tahitian stud earrings and pendant



IP116-EWT12

18ct wg drop 12mm Tahitian diamond earrings 0.20ct



IP30-EWT10

18ct wg drop 10mm Tahitian diamond huggy earrings 0.12ct



IP34-EWT10

18ct wg drop 10mm Tahitian diamond huggy earrings 0.13ct



IP993-EWT10

18ct wg drop 10mm Tahitian huggy earrings



IP111-9EWT11/9PWT13

9ct wg Tahitian drop 11mm hook diamond earrings 0.04ct and 13mm diamond enhancer 0.05ct



IP144-EWT10

18ct wg drop 10mm Tahitian shepherd hook earrings



IP102-EWT10

18ct wg drop 10mm Tahitian shepherd hook earrings



IP106-EWT10

18ct wg round 10mm Tahitian shepherd hook earrings



IP050-EWT10

18ct wg round 10mm Tahitian diamond stud earrings 0.10ct



IP19MM-EWT9

18ct wg round 9mm Tahitian stud earrings



IP406-EWT11

18ct wg round 11mm Tahitian diamond earrings 0.42ct



IP174-EWT12

18ct wg drop 12mm Tahitian wide pave diamond earrings 0.15ct



IP1001-EWT9

18ct wg drop 9mm Tahitian earrings



IP175-EYT12

18ct yg drop 12mm Tahitian stud earrings



IP901-EYT11

18ct yg drop 11mm Tahitian diamond shepherd hook earrings 0.08ct



IP111-9EYT11

9ct yg drop 11mm Tahitian diamond hook earring 0.04ct



IP061-PYT12

18ct yg drop 12mm Tahitian pendant



IP063-PYT13

18ct yg drop 13mm Tahitian pendant



IP111-9PYT13

9ct yg drop 13mm Tahitian diamond enhancer 0.05ct



IP403-PWT13

18ct wg drop 13mm Tahitian diamond pendant 0.08ct



IP171-PWT13

18ct wg round 13mm Tahitian diamond pendant 0.24ct



IP028-PWT13

18ct wg drop 13mm Tahitian diamond enhancer 0.035ct



IP1006-PWT9

18ct wg round 9mm Tahitian diamond pendant 0.04ct



IP259-PWT10

18ct wg drop 10mm Tahitian pendant



IP526-PWT11

18ct wg drop 11mm Tahitian diamond enhancer 0.15ct



IP404-PWT13

18ct wg drop 13mm Tahitian diamond enhancer 0.18ct



IP222-PWT14

18ct wg drop 14mm Tahitian enhancer



IP777-RWT10

18ct wg round 10mm Tahitian diamond ring 0.20ct



IP701-PWT12

18ct wg drop 12mm Tahitian diamond enhancer 0.08ct



IP1000-PWT12

18ct wg drop 12mm Tahitian pendant



IP627-PWT12

18ct wg round 12mm Tahitian diamond pendant 0.21ct



IP1005-RWT9

18ct wg round 9mm Tahitian diamond ring 0.04ct



IP4439-RWT10

18ct wg round 10mm Tahitian diamond ring 0.12ct



IP778-RWT10

18ct wg round 10mm Tahitian diamond ring 0.312ct



18CT SOUTH SEA AND TAHITIAN SHEPHERD HOOK STAND

IP029-EYS9
18ct yg drop 9mm Broome South Sea shepherd hooks

IP029-EYS10
18ct yg drop 10mm Broome South Sea shepherd hooks

IP029-EYS11
18ct yg drop 11mm Broome South Sea shepherd hooks

IP029-EWT9
18ct wg drop 9mm Tahitian shepherd hooks

IP029-EWT10
18ct wg drop 10mm Tahitian shepherd hooks

IP029-EWT11
18ct wg drop 11mm Tahitian shepherd hooks

18CT SOUTH SEA AND TAHITIAN PENDANT STAND

IP1006-PYS9
18ct yg drop 9mm Broome South Sea diamond pendant 0.04ct

IP259-PYS10
18ct yg drop 10mm Broome South Sea pendant

IP269-PYS11
18ct yg drop 11mm Broome South Sea enhancer

IP259-PWT9
18ct wg drop 9mm Tahitian pendant

IP259-PWT10
18ct wg drop 10mm Tahitian pendant

IP259-PWT11
18ct wg drop 11mm Tahitian pendant



*Chain for display purposes only



18CT SOUTH SEA AND TAHITIAN STUD STAND

IPT8MM - 18ct round 8mm Tahitian stud earrings

IPS9MM - 18ct round 9mm Broome South Sea stud earrings

IPT9MM - 18ct round 9mm Tahitian stud earrings

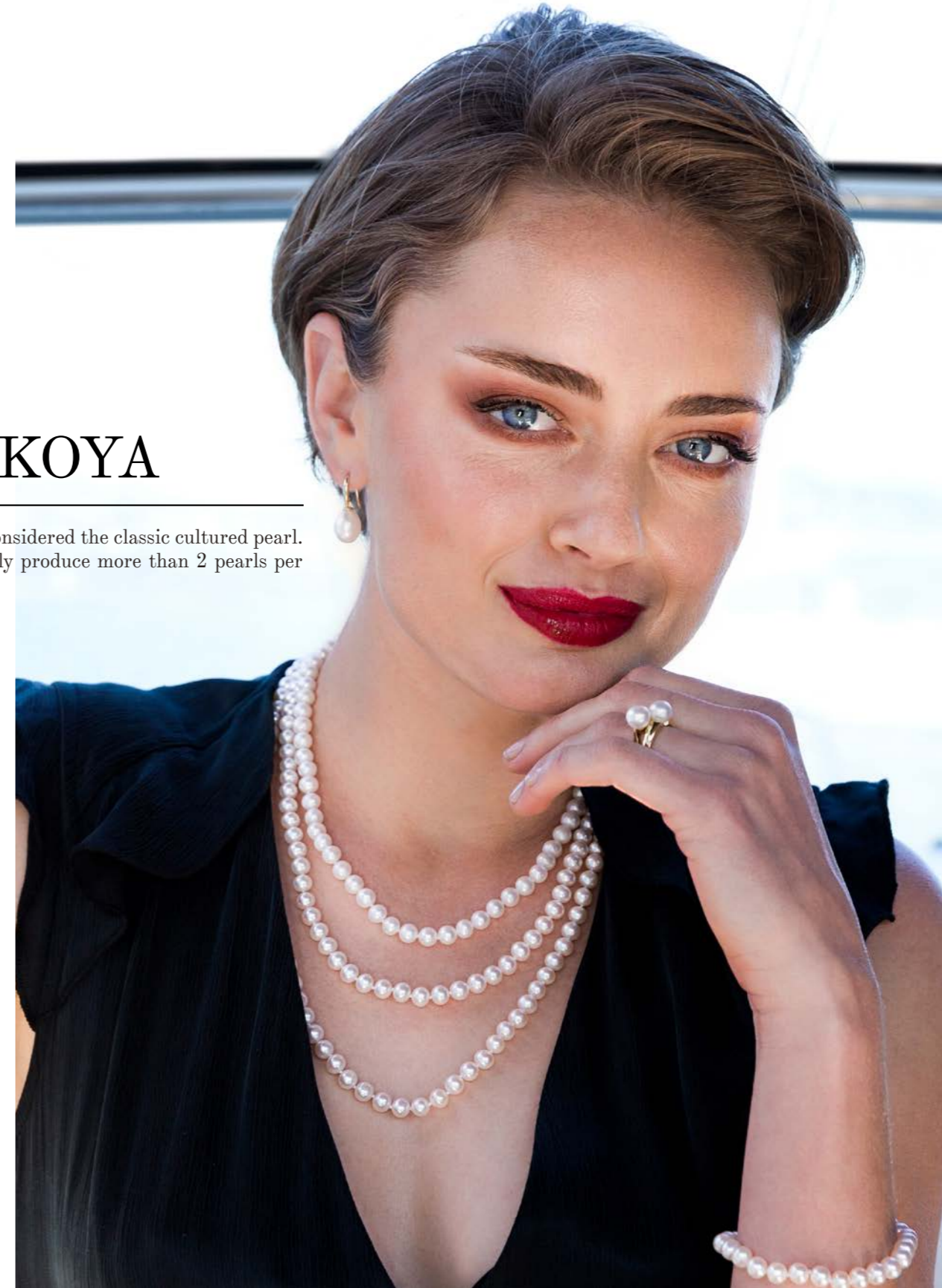
IPS10MM - 18ct round 10mm Broome South Sea stud earrings

IPT10MM - 18ct round 10mm Tahitian stud earrings

IPS11MM - 18ct round 11mm Broome South Sea stud earrings

AKOYA

Akoya Pearls are considered the classic cultured pearl. Akoya oysters rarely produce more than 2 pearls per harvest.



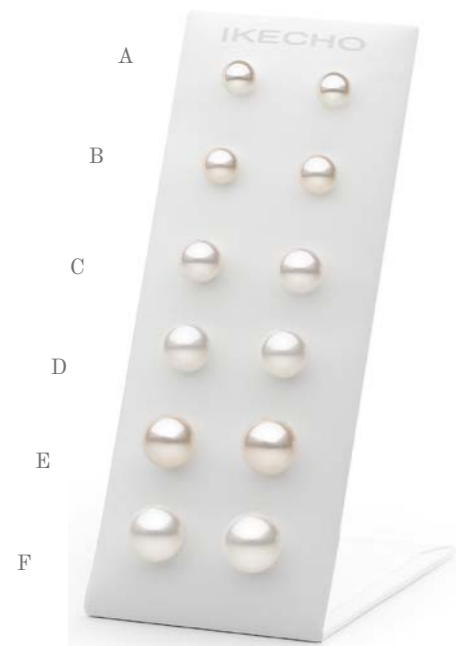
- The Akoya pearl is the world's best-known pearl, they are a saltwater cultured pearl from the akoya oyster (*Pinctada fucata martensii*) found in Japan

- Akoya pearls are often very round and spherical in shape and are complemented by very high luster.

- While the akoya pearl is considered to be more rare and valuable than the freshwater pearl, it is the third most valuable commercially produced pearl

- The vast majority of the world's akoya pearls are produced in Japan

- Akoya oyster is the smallest commercially farmed pearl-producing oyster. An average akoya pearl is only 7 mm. Akoya pearls are currently being harvested in sizes from as small as 2 mm up to the very rare 10mm.



18CT JAPANESE AKOYA WHITE ROUND STUD STAND

STAND #6

A	NS09-18	5-5.5mm
B	NS10-18	6-6.5mm
C	NS11-18	7-7.5mm
D	NS12-18	7.5-8mm
E	NS13-18	8-8.5mm
F	NS14-18	8.5-9mm



JAPANESE AKOYA STRANDS
(white, round, unstrung)

NS09	5-5.5mm
NS10	6-6.5mm
NS11	7-7.5mm
NS12	7.5-8mm
NS13	8-8.5mm
NS14	8.5-9mm
NSGRAD	4.5-8mm

All strands can be finished with a clasp of your choice and strung knotted at any length upon request.



NS11N-9YG

9ct yg Japanese Akoya
7-7.5mm round strand 45cm



NSGRAD-9YG

9ct yg Japanese Akoya 4.5-8mm
round strand 45cm

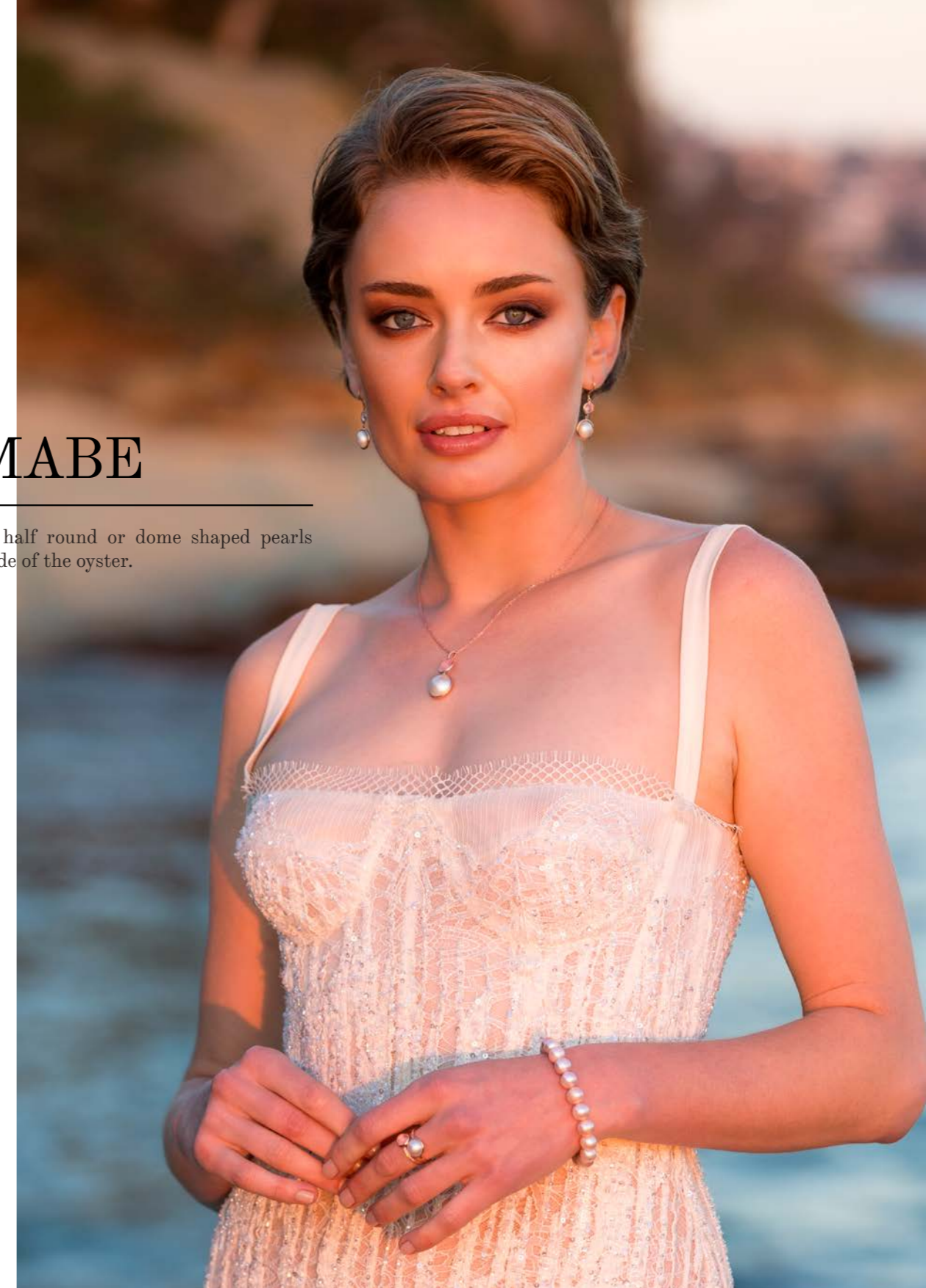


IP19WYG-A

9ct yg round white 7.5-8mm
Japanese Akoya shepherd
hook earrings

MABE

Mabe pearls are half round or dome shaped pearls grown on the inside of the oyster.



- Mabe pearls, also known as blister pearls, are half-pearls that are cultivated on the inside of a mollusk's shell.
- A small nucleus, usually made out of mother of pearl, is attached to the shell of the mollusk and left to accumulate nacre over a period that usually runs about two or three years.

- Once the pearls are ready for harvest, they are cut out of the shell and their nucleus is removed, leaving a hollow pearl. The pearl is then filled with a colorless resin to reinforce the pearl's structure and sealed with a mother-of-pearl backing to close everything up.

- Mabe pearls can be grown in any saltwater or freshwater pearl-bearing musell, but the most popular varieties are Pinctada maxima that is grown in Australia

- Average sizes are 12.0 -14.0 mm across, and anywhere from 14.0-18.0 mm in length. They come in a range of organic, free-form shapes as well as the classic tear-drop and rounded disc shapes.

- "Half-pearls" are much more affordable than a whole, loose pearl would be.



IP1107E-RQR/IP1107-RQR

9ct rg 10mm round mabe & 6mm rose quartz hook earrings and 15mm Mabe rose quartz pendant



IP1056E-9R/P-9R/R-9R

9ct rg oval 8x10mm Australian Mabe earring & ring and 10x14mm pendant



IP3810-EYG/PYG/9YG

9ct yg white 13mm Mabe shepherd hook earrings, enhancer and ring



IP11079P-9R

9ct rg oval 10x14mm Australian Mabe pendant



IP1107-BTY

9ct yg 15mm Mabe blue topaz pendant



IP1107-GY

9ct yg 15mm Mabe garnet pendant



IP1056E-9Y

9ct yg oval 8 x 10mm Australian Mabe shepherd hook earrings



IP661-E/R

9ct yg 10mm white Mabe stud earrings and ring



IP664-E/R

9ct yg 13mm white Mabe shepherd hook earrings and ring



IP10315-9R

9ct rg oval 8 x 10 Australian Mabe diamond ring 0.12ct



IP1154-RRQS

9ct rg 10mm Mabe ring with square rose quartz diamond ring 0.07ct



IP1154-RRQR

9ct rg 10mm Mabe ring with round rose quartz diamond ring 0.07ct



IP2688-9YG/IP2688-9PYG

9ct yg white 10mm Mabe diamond ring 0.03ct and 13mm diamond enhancer 0.03ct



IP10MCLIP-9Y-N

9ct yg 10mm white Mabe clip-on earrings with no pin (pierced also available)



IP13MCLIP-9Y

9ct yg 13mm white Mabe clip-on earrings with pin (non-pierced also available)



IP1017-9Y

9ct yg oval 8 x 10mm Australian Mabe diamond ring 0.04ct



IP3679-9YG

9ct yg white 10mm Mabe diamond ring 0.02ct



IP3579-9YG

9ct yg 13mm white Mabe diamond ring 0.02 ct



IP9433-9YG

9ct yg 13mm Mabe diamond ring 0.035ct



IP11620-SS

S/S white 10mm Mabe ring with rg plating



IP664-R-SS

S/S white 13mm Mabe ring



IP11192-ESS/PSS/SS

S/S 8x10mm Mabe shpherd hook earrings, pendant and ring with rg plating



IPMPEAR-SS/IP103-SS

S/S tear drop shaped Mabe earrings and enhancer



IP661-E-SS

S/S 10mm Mabe stud earrings



IP2688-SS

S/S white 10mm Mabe cz ring



IP2689-SS

S/S white 13mm Mabe cz ring



IP3579-SS

S/S white 13mm Mabe cz wide band ring



IP10MCLIP-SS

S/S white 10mm Mabe clip-on earrings with pin (non-pierced also available)



IP13MCLIP-SS

S/S white 13mm Mabe clip-on earrings with pin (non-pierced also available)



IP665-P-SS

S/S white 13mm Mabe enhancer



IP1154-SRQS

S/S 10mm Mabe with square rose quartz cz ring



IP1154-SRQR

S/S 10mm Mabe with round rose quartz cz ring



IP3679-SS

S/S white 10mm Mabe cz ring



IP1107-RQ-SS

S/S 15mm round Mabe rose quartz pendant



IP1107-BTSS

S/S 15mm round Mabe blue topaz pendant



IP1107-GY-SS

S/S 15mm round Mabe garnet pendant



FRESHWATER

Freshwater Pearls are the most common type of. They come in an array of colours which is a big advantage over saltwater varieties and it makes them highly versatile for jewellery.



- Freshwater pearls are the most commonly produced pearls. As the name suggests they are grown in freshwater, usually in mussels that live in lakes and rivers.

- Freshwater pearls are cultured by tissue nucleation, a single freshwater pearl mussel is capable of producing 24-32 pearls.

- Freshwater pearls have the widest range of natural colors, ranging from white to pink to lavender as well as dyed options like black, grey, gold.

- Due to their mass production, Freshwater pearls are also popular for their affordable price points.

- Freshwater pearl sizes typically range from 5mm to 10mm, though they are often available in larger sizes up to 13mm.



IP901-YGMM/IP1006-F-P

9ct yg white drop 9-9.5mm FWP diamond shepherd hook earrings 0.08ct and pendant 0.04ct



IP385-E9Y/P9Y

9ct yg white button 7-7.5mm FWP hook earrings and pendant



IP108-YG/IP32-YG

9ct yg white drop 10mm FWP shepherd hook earrings and enhancer



IP101-R/IP100-E

9ct yg white button 8-8.5mm FWP ring and earrings



IP38-EYG/PYG

9ct yg white button 12-12.5mm FWP euro earring and enhancer



IP704-E/P

9ct yg white drop 9mm FWP diamond earrings 0.05ct and chain pendant 0.03ct



MF800-E/P

9ct yg white drop 7.5-8mm FWP shepherd hook earrings and pendant



IP011E-9YG/IP0026P-9YG

9ct yg white round 6-6.5mm FWP shepherd hook earrings and pendant



IP24-YG/IP31-YG

9ct yg white drop 9mm FWP diamond huggy earrings 0.13ct and diamond enhancer 0.08ct



IP007E-9RG/P-9RG

9ct yg drop white 9-9.5mm FWP hook earrings 0.063ct and pendant 0.03ct



IP38-ERG-P/PRG-P

9ct rg pink button 12-13mm FWP euro earrings and 13-13.5mm enhancer



IP508-WG/PWG

9ct wg white drop 9mm FWP diamond earrings 0.18ct and 10mm diamond pendant 0.12ct



IPWJ11-RYG/PYG/YG

9ct yg white round 9-9.5mm FWP diamond ring 0.12ct, pendant 0.06ct and earrings 0.12ct



IP014E-9YG/015-P9YG

9ct yg white drop 9-9.5mm FWP long flared stud earrings and 10-10.5mm pendant



IP1228-9YG

9ct yg white drop 8-8.5mm cage pendant



IP806-WG/P-WG

9ct wg white drop 9mm FWP diamond earrings 0.04ct and pendant 0.03ct



IP504-WG/PWG

9ct wg white drop 7.5-8mm FWP diamond earrings 0.06ct and 9-9.5mm pendant 0.04ct



IP990-WG

9ct wg white drop 9-9.5mm FWP huggy earrings



IP36-EYG

9ct yg white drop 9-9.5mm
FWP huggy earrings



IP36-ERG

9ct rg white drop 9-9.5mm
FWP huggy earrings



IP990-YG

9ct yg white drop 9-9.5mm
FWP huggy earrings



IP001LE-9RG-COIN

9ct rg white coin 12-13mm FWP
long hook earrings



IP001LE-9YG-COIN

9ct yg white coin 12-13mm FWP
long hook earrings



IP001LE-9YG-BAR

9ct yg white 12-13mm baroque
FWP long hook earrings



IP37-EYG

9ct yg white drop 10-10.5mm
FWP large huggy earring



IP005E-9YG

9ct yg white drop 9-9.5mm
FWP hook earrings



IP77-WRG

9ct rg white drop 12-12.5mm
FWP shepherd hook earrings



IP011P-9YG

9ct yg white drop 10-10.5mm
FWP diamond pendant 0.013ct



IP138-P9Y-COIN

9ct yg white coin 12-13mm
FWP enhancer



IP138-P9Y-BAR

9ct yg white baroque 12-13mm
FWP enhancer



TP03-WE

9ct yg white 13-14mm keshi FWP
shepherd hook earrings



IP80WRG

9ct rg white baroque nucleated
12-14mm FWP shepherd
hook earrings



IP80WP

9ct yg white baroque nucleated
12-14mm FWP enhancer



IP500-9YGD

9ct yg white round 12mm Edison
FWP basket adjustable necklace
50, 60, 70cm with diamond 0.066ct



IP399-E9Y

9ct yg white round 8.5-9mm
FWP hook earrings



IP001LE-9YG

9ct yg white drop 9-9.5mm FWP
long hook earrings



IP003E-9YG

9ct yg white round 4mm & 8mm
FWP shepherd hook earrings



IP7CLIP-W-9KY

9ct yg white button 7mm FWP clip
on earrings *non-pierced



IP9CLIP-W-9KY

9ct yg white button 9mm FWP clip
on earrings *non-pierced



R001-9YGW

9ct yg white round 7mm
FWP diamond ring 0.01ct



R001-12MM

9ct yg white button 12mm
FWP diamond ring 0.02ct



R008-12MM

9ct yg white button 12mm FWP ring



IP8116-RYG

9ct yg white 9-9.5mm round FWP
diamond ring 0.13ct



IPRS12-9Y

9ct yg white button 10.5-11mm
FWP ring



IPRS11-9YG

9ct yg white 10-10.5mm button FWP
diamond ring 0.09ct



R008-9YGW

9ct yg white round 8-8.5mm FWP ring



R009-9YGW

9ct yg white round 8mm FWP ring



IPRS2-9Y

9ct yg white button 10-10.5mm
FWP ring



IPRS3-9Y

9ct yg white button 8-8.5mm
FWP ring



IPRS7-9Y

19ct yg white button 8.5-9mm
FWP diamond ring 0.03ct



IP38-RYG

9ct yg white button 12-12.5mm
FWP ring



IPRS8-9R

9ct rg white button 10-10.5mm
FWP ring



IP8172-RRG

9ct rg white round 9-9.5mm
FWP diamond ring 0.11ct



IPRS21-9RG

9ct rg pink 12-13mm button FWP ring



IP7585R

S/S white button 10mm
FWP ring



IPRS33

S/S white keshi 9-10mm
FWP ring



IPRS36-RGP

S/S white button 9-9.5mm
FWP 14kr 3 micron plated ring



IPRS22

S/S white biwa
16.5-17mm FWP ring



IPRS23

S/S white button
10.5-11mm FWP cz ring



IPRS24

S/S white button
8.5-9mm FWP ring



IPRS2

S/S white button
10-10.5mm FWP ring



IPRS2-B

S/S dyed black button
10-10.5mm FWP ring



IPRS8

S/S white button
10-10.5mm FWP 3 band ring



IPRS25

1 S/S white button 9.5-10mm
FWP ring



IPRS26

S/S white button 10-10.5mm
FWP ring



IPRS28

S/S white button 10-10.5mm
FWP ring



IPRS11

S/S white button 9.5-10mm
FWP cz ring



IPRS12

S/S white button 10.5-11mm
FWP ring



IPRS21

S/S white button 11.5-12mm
FWP ring



IP139-PSF13

S/S white drop 12-13mm
FWP cz enhancer



IP138-PSF10

S/S white drop 10mm
FWP enhancer



IP994-NS

S/S 9.5-10mm white near round FWP
43 +3cm ext. chain rhodium plated



IPBH314-SS

S/S white button 9-10mm
FWP cz brooch



IPBH451

S/S white button 11-12mm FWP cz
dragonfly brooch & pendant



IPBH040

S/S white button 5.5-6mm FWP
brooch



IP41E-RGP/P-RGP

S/S white 13-14mm nucleated
baroque FWP 14k rg plated huggy
earrings and enhancer



IP46E-RGP/P-RGP

S/S white 5-6mm button FWP 14k rg
plated cz hook earrings and
6-7mm cz pendant



IP58E-RGP/P-RGP

S/S white 5.5-6mm FWP 14k rg 3
micron plated cz hook earrings and
7-7.5mm pendant



IP0368-ESS

S/S 8-8.5mm white drop FWP
threader earrings



IP448E-CZ

S/S white drop 8.5-9mm FWP cz
huggy earrings (interchangeable)



IP448EDI

S/S white round 11-12mm Edison cz
huggy earrings (interchangeable)



IP61E-RGP/P-RGP

S/S white button 8-8.5mm FWP 14k
plated 3 micron frosted hook earrings
and 9-9.5mm pendant



IP65E-RGP/P-RGP

S/S white button 8-8.5mm FWP +
pink MOP 14KR plated 3 micron cz
hook earrings and 9-9.5mm pendant



IP67E-RGP/N-RGP

S/S white button 9-9.5mm FWP
14KR plated 3 micron frosted cz hook
earrings and 10-10.5mm pendant and
chain 45cm + 3cm.



IP1213-N

S/S jumbo biwa 14-18mm FWP
pendant with moonstone with
adjustable chain necklace 70cm



IP498NS-CAGE

S/S white 7.5-8mm round FWP
cz cage pendant with chain
45cm + 3cm ext.



IP382NSS

S/S white 8.5-9mm button
FWP pendant with chain
45cm + 3cm ext.



IP41E/P

S/S white 13-14mm nucleated
baroque FWP huggy earrings and
enhancer



IKE04-ESS/NSS

S/S white keshi 9-10mm FWP
cz stud earrings and 10-11mm keshi
pendant chain 42cm + 5cm



IP450E-RGP/P-RGP

S/S 18K rg plating 11mm round
pink Edison FWP studs and 12mm
pendant



IP0512-WE/WP

S/S white 8.5-9mm drop FWP with cz hook clip earrings and pendant with chain



IP1228WE-SS/W-CAGE

S/S FWP white 6-6.5mm drop cage hook earrings and 8-8.5mm drop cage pendant



MF790-WE/WP

S/S white 7.5-8mm drop FWP hook earrings and pendant with box chain



IP56E

S/S white drop 8-9mm FWP cz earrings



IP001LE-SS

S/S white drop 9-9.5mm long hook earrings



IP399-ESS

S/S white round 9-9.5mm FWP hook earrings



IP46E/P

S/S white 5-6mm button FWP cz hook earrings and 6-7mm pendant



IP47E/P

S/S white 9-10mm drop FWP hook cz earrings and pendant



IP-HALO-IEWSS

S/S white 7mm button FWP studs with halo claw open edge

Add on purchase: interchangeable 7-9mm button (different colours available)

add-on



IPCLIPSS-W

S/S white button 7-7.5mm FWP clip on earrings (non-pierced)



IP9CLIPSS-W

S/S white button 9-9.5mm FWP clip on earrings (non-pierced)



IP9CLIPSS-B

S/S dyed black button 9-9.5mm FWP clip on earrings (non-pierced)



IP49E/P

S/S white 7-8mm button FWP hook clip earrings and pendant



IP16-E

S/S white drop 9-9.5mm FWP cz long shepherd hook earrings



IP89-E

S/S white button 5mm and 8mm FWP earrings



IP307-CLIPW

S/S white drop 7.5-8mm FWP clip-on dangling earrings (non-pierced)



IP307-CLIPP

S/S pink drop 7.5-8mm FWP clip-on dangling earrings (non-pierced)



IP307-CLIPB

S/S dyed black drop 7.5-8mm FWP clip-on dangling earrings (non-pierced)



IP32-E

S/S white baroque 11-12mm
FWP short shepherd
hook earrings



IKE03-S12

S/S 12-13mm white keshi
FWP stud earrings



IP139-E

S/S jumbo nucleated 13-14mm FWP
shepherd hook earrings



IP137ESS-D

S/S white drop baroque 12mm
FWP hook earrings



IP137PSS-D

S/S white drop baroque 12mm
FWP pendant



IP90ESS/NSS

S/S white keshi 14-16mm FWP hook
earrings and pendant chain
40cm + 5cm ext.



IP73ESS

S/S white drop 10-12mm
FWP Edison hoop earrings



IP1213E

S/S jumbo biwa 14-18mm FWP shepherd
hook earrings with moonstone



IP74ESS

S/S white nucleated 12-13mm
hoop earrings



IP310-BP

Pink off round 10-11mm FWP
19cm stretch fit bracelet



IP310-B

White off round 10-11mm FWP
19cm stretch fit bracelet



IP310-BG

Dyed grey off round 10-11mm FWP
19cm stretch fit bracelet



IP1212-E

S/S 12mm biwa FWP shepherd
hook earrings



TP01-GE

S/S dyed grey keshi 11-12mm FWP
shepherd hook earrings



TP01-WE

S/S white keshi 11-12mm FWP
shepherd hook earrings,



MF89-W/W-B

S/S white circle 8-9mm FWP
strand 45cm and bracelet 19cm
*strand also available in 50cm



MF94-W

S/S white near round 8.5-9.5mm
FWP 45cm strand



MF91-W

S/S white near round 10-11mm FWP
strand with magnetic clasp 45cm



TP05-W9Y

9ct yg white 10-11mm keshi
FWP 45cm strand



TP05-P9Y

9ct yg pink 10-11mm keshi
FWP 45cm strand



TP06-WSS

White keshi 10.5-11.5mm FWP
45cm strand with s/s magnetic clasp



IP82-SS

S/S white baroque nucleated
13mm+ FWP 46cm strand



IP80-PSS-45

S/S natural pink baroque 12-14mm
nucleated FWP 45cm strand



IP80-G-SS

S/S dyed grey baroque 12mm+
nucleated FWP 46cm strand



TP06-SS

S/S dyed grey keshi 10.5-11.5mm FWP
45cm strand with magnetic clasp



TP04-WB/TP04-W

S/S white 10.5-11.5mm keshi FWP
bracelet 19cm with toggle clasp and
strand 45cm



TP03-B/TP03

9ct yg white keshi 12-14mm FWP
bracelet 19cm and strand 45cm
(available in 20cm magnetic clasp)



IKE02-B/ IKE02

S/S white biwa 20-25mm FWP
bracelet 20cm and strand 45cm
with bolt clasp



SP195-SS-45CM

S/S multi white, grey, pink baroque
9.5-10.5mm FWP strand 45cm



SP199-SS

S/S white, dyed black and grey
8.5-9mm keshi FWP strand 120cm
with 9mm clasp



TP03-SSBM-20CM/TP03-SSM

S/S white keshi FWP 13-14mm bracelet
20cm and strand 45cm with
magnetic clasp



IP411-B19/IP411

S/S white keshi FWP 3 row wire
bracelet 19cm and necklace with bolt
ring clasp 43cm



IP231B/IP231N

S/S white keshi 8-9mm chain
bracelet 18.5cm + 3cm ext. and
8-10mm chain necklace
40cm + 6cm ext.



SP198-SS

S/S white keshi 8.5-9mm FWP strand
120cm with 9mm clasp



SP195-SS

S/S white, grey, pink keshi 9.5-10.5mm
strand 120cm with 9mm clasp



SP198-G

Dyed grey 8.5-9mm keshi FWP
strand 120cm



SP196-B

S/S white keshi 9.5-10.5mm FWP elastic bracelet



SP195-B

S/S white, grey, pink keshi 9.5-10.5mm elastic bracelet



SP194-B

Dyed grey 9.5-10.5mm keshi FWP elastic bracelet



IP313-BP

Pink 7.5-8.5mm baroque FWP elastic bracelet



IP313-BW

White 7.5-8.5mm baroque FWP elastic bracelet



IP313-BG

Dyed grey 7.5-8.5mm baroque FWP elastic bracelet



IP248-BLK

White 10-11mm FWP black leather bracelet with stainless steel 18cm



IP230-BC

7 rows cream leather off round and baroque 6.5-13.5mm FWP bracelet with stainless steel clasp 19cm



IP230-BLK

7 rows black leather off round and baroque 6.5-13.5mm FWP bracelet with stainless steel clasp 19cm



BAMBINI COLLECTION



IE-EJ4-3MMS

S/S white round 3-3.5mm FWP studs



IE-EJ4-4MMS

S/S pink round 4-4.5mm FWP studs



IE-EJ5-3MMS

S/S pink round 3-3.5mm FWP studs



WTH3-B11

S/S White near round 3-3.5mm FWP
11cm lobster clasp ext. 3cm
(available in pink)



WTH3-B14

S/S White near round 3-3.5mm FWP
14cm lobster clasp ext. 3cm
(available in pink)



IC-W3-11-ELASTIC

Oval white 3-3.5mm FWP elastic
bracelet 11cm
(available in pink)



IC-L5-SS-35

S/S round 5-5.5mm FWP
pink strand 35cm
(available in white)



IP314-B14

S/S white keshi 5-6mm FWP 14cm
lobster clasp ext.3cm



IP314-PB14

S/S pink keshi 5-6mm FWP 14cm
lobster clasp ext.3cm

EDISON FRESHWATER

Freshwater Edisons Pearls are cultivated similar to Akoya & South Sea by inserting one bead into the mussel tissue of the oyster.



- Edison pearls are freshwater cultivated pearls, they are bead nucleated grown in the freshwater mussels primarily in China

- The average size of an Edison pearl ranges between 11.0-15.0mm

- Edison pearls are known for their intense, metallic naturally colored hues such as pink, white, purple, gold, bronze, and more.

- Edison pearls are positioning themselves as a very affordable alternative to more expensive South Sea pearls.

- Edison pearls are cultivated by inserting one bead into the mussel that then becomes the pearl, it requires two to three years to form



IP111RG-EDI/PRG-EDI

9ct rg natural pink Edison 13mm FWP diamond shepher hook earrings 0.04ct and enhancer 0.05ct



IP111YG-EDI-W/PYG-EDI-W

9ct yg white Edison 13mm FWP diamond shepherd hook earrings 0.04ct and enhancer 0.05ct



IP767-EYG/PYG

9ct yg white round 12mm Edison FWP short plain hook earrings and 11.5-12mm pendant



IP39-RRG-W

9ct rg white round 13-14mm Edison FWP diamond ring 0.05ct



IP39-RRG

9ct rg pink round 13-14mm Edison FWP diamond ring 0.05ct



IP39-PRG

9ct rg pink round FWP Edison 13-14mm diamond pendant 0.04ct



IP767-ERG

9ct rg white round 12mm Edison FWP short plain hook earrings



IP901-YG-EDI

9ct yg white 9mm Edison round diamond shepherd hook earrings 0.08ct



IP901-WG-EDI

9ct wg white 9mm Edison round diamond shepherd hook earrings 0.08ct



IP1080-EDI-9YG

9ct yg white round 13-14mm Edison FWP chain necklace 45cm



IEEJ412MMS-EDI

S/S white round 12mm Edison FWP studs earrings



IEEJ512MMS-EDI

S/S pink round 12mm Edison FWP studs earrings



IEEJ5-12MM-EDI-9RG

9ct rg pink round 12mm Edison FWP studs earrings



IP0292WP-14

9ct yg white 14-14.5mm round Edison FWP wedge pendant



IP0292PP-14

9ct rg pink 14-14.5mm round Edison FWP wedge pendant



IP70ESS

S/S white Edison drop 13-14mm FWP hook earrings



IP767-ESS-CZ

S/S white round 12mm Edison FWP cz hook earrings



IP767ESS-W/PSS

S/S white round 12mm Edison FWP hook earrings and 11.5-12mm pendant



IP1080-EDI-SS

S/S white round 13-14mm Edison FWP chain necklace 45cm



IP500NSS-W

S/S white round 12mm Edison FWP two-tone basket adjustable necklace 50, 60, 70cm



IP95-BANGLE

S/S white 11.5-12mm Edison FWP cz bangle 19cm



IP107-YG-WHT

9ct yg white 13mm Edison nucleated FWP shepherd hook earrings



IP107-PYG-WHT

9ct yg white 13mm Edison nucleated FWP enhancer



IP82-W9Y

9ct yg white near round 12-15mm Edison nucleated FWP strand (available in 9ct rose gold & s/s clasp)



IP82-BANGLE-W

S/S white Edison FWP nucleated 14-14.5mm FWP bangle 19cm



IP82-BANGLE

S/S natural pink 14-14.5mm Edison nucleated FWP bangle 19cm



IP96-BANGLE-RGP

Rg plated white 12mm keshi FWP stainless steel bangle



IP107-YG

9ct yg natural pink 13mm Edison FWP nucleated shepherd hook earrings



IP107-PYG

9ct yg natural pink 13mm Edison FWP nucleated enhancer



IP82-P9Y-B/IP82-P9Y

9ct yg natural pink near round 11-15mm Edison FWP nucleated bracelet 20cm and strand 45cm (available in 9ct rose gold & s/s clasp)



IP82-BANGLE-9RP

9ct rg natural pink 13mm drop Edison FWP bangle



IP82-BANGLE-9Y

9ct yg white 13mm drop Edison FWP bangle



IP82-BANGLE-9R

9ct rg white 13mm drop Edison FWP bangle



IP86-PBSS/IP86-PSS

S/S natural multi pink round 10-11.5mm Edison FWP bracelet 20cm and strand 45cm



IP84-BSS

S/S black round 10-12mm Edison FWP strand 45cm



IP85-WSS

S/S white round 11-13.5mm Edison FWP strand 45cm



- A. IP012-PRG-EDI 9ct rg natural pink 13mm Edison FWP nucleated enhancer
- B. IP108-RG-EDI 9ct rg natural pink 13mm Edison FWP nucleated shepherd hook earrings
- C. IP82-P9RB 9ct rg natural pink mult Edison nucleated near round 11-15mm FWP bracelet 20cm
- D. IP82-P9R 9ct yg natural pink near round 11-15mm Edison FWP nucleated strand 45cm

Freshwater Classic Round Collection



7-7.5mm with 9ct yg clasp shown in image

9ct YG

	White 45cm	White 19cm	Pink 45cm	Pink 19cm	Black 45cm	Black 19cm
5-5.5mm	IC-W5-14	IC-W5-B	IC-L5-14	IC-L5-B	IC-B5-14	IC-B5-B
6-6.5mm	IC-W6-14	IC-W6-B	IC-L6-14	IC-L6-B	IC-B6-14	IC-B6-B
7-7.5mm	IC-W7-14	IC-W7-B	IC-L7-14	IC-L7-B	IC-B7-14	IC-B7-B
8-8.5mm	IC-W8-14	IC-W8-B	IC-L8-14	IC-L8-B	IC-B8-14	IC-B8-B

Sterling Silver

	White 45cm	White 19cm	Pink 45cm	Pink 19cm	Black 45cm	Black 19cm
5-5.5mm	IC-W5-SS	IC-W5-BSS	IC-L5-SS	IC-L5-BSS	IC-B5-SS	IC-B5-BSS
6-6.5mm	IC-W6-SS	IC-W6-BSS	IC-L6-SS	IC-L6-BSS	IC-B6-SS	IC-B6-BSS
7-7.5mm	IC-W7-SS	IC-W7-BSS	IC-L7-SS	IC-L7-BSS	IC-B7-SS	IC-B7-BSS
8-8.5mm	IC-W8-SS	IC-W8-BSS	IC-L8-SS	IC-L8-BSS	IC-B8-SS	IC-B8-BSS

*Available in wg and rg clasp on requests **Different length can be ordered on request



IC-W7-50

9ct yg round white 7-7.5mm strand 50cm



IC-W7-60

9ct yg round white 7-7.5mm strand 60cm



IC-L6-BSS

S/S pink round FWP round 6-6.5mm bracelet



IC-B6-BSS

S/S dyed black round FWP round 6-6.5mm bracelet



IC-GRAD

9ct yg white round FWP 4.5-7.5mm graduated 45cm single strand



IC-GRAD2

9ct yg white round FWP 4.5-7.5mm graduated 45cm double strand



SP270-MAG

9ct yg white round FWP 10.5-11.5mm 45cm strand with magnetic clasp



LTH6

S/S pink oval 6-6.5mm FWP 45cm strand



WTH6

S/S white oval 6-6.5mm FWP 45cm strand



SP293-9Y

9ct yg white near round 11-13mm FWP strand



MF90-W/WB

S/S white round 9.5-10.5mm FWP 45cm strand and 19cm bracelet



SP270/B

9ct yg white round FWP 10.5-11.5mm 45cm strand and 19cm bracelet



IPM7W

S/S white 5.5-6mm FWP elastic 3 row bracelet with bars

Freshwater Button Studs Collection



S/S Stand 1
9ct Stand 2

S/S Stand 5a

S/S Stand 23
9ct Stand 24

S/S Stand 29
9ct Stand 30

S/S Stand 26
9ct Stand 27

Freshwater Round Studs Collection



S/S Stand 3
9ct Stand 4

S/S Stand 31
9ct Stand 32

S/S Stand 33
9ct Stand 34

S/S Stand 35
9ct Stand 36

Sterling Silver

	White	Pink	Dyed Black	Dyed Grey
6-6.5mm	IE-W-SS6	IE-L-SS6	IE-B-SS6	IE-G-SS6
7-7.5mm	IE-W-SS	IE-L-SS	IE-B-SS	IE-G-SS
8-8.5mm	IE-W-SS-8	IE-L-SS-8	IE-B-SS-8	IE-G-SS-8
9-9.5mm	IE-EJ4-SS-9MM	IE-EJ5-SS-9MM	IE-EJ6-SS-9MM	IE-EJ8-SS-9MM
10-10.5mm	IE-EJ4-B10	IE-EJ5-B10	IE-EJ6-B10	IE-EJ8-B10
11-11.5mm	IE-EJ4-B11	IE-EJ5-B11	IE-EJ6-B11	IE-EJ8-B11
12-12.5mm	IE-EJ4-B12	IE-EJ5-SS-12MM	IE-EJ6-SS-12MM	IE-EJ8-SS-12MM

9ct YG

	White	Pink	Dyed Black	Dyed Grey
6-6.5mm	IE-EJ4-14-6MM	IE-EJ5-14-6MM	IE-EJ6-14-6MM	IE-EJ8-14-6MM
7-7.5mm	IE-EJ4-9	IE-EJ5-9	IE-EJ6-9	IE-EJ8-9
8-8.5mm	IE-EJ4-14-8MM	IE-EJ5-14-8MM	IE-EJ6-14-8MM	IE-EJ8-14-8MM
9-9.5mm	IE-EJ4-14-9MM	IE-EJ5-14-9MM	IE-EJ6-14-9MM	IE-EJ8-14-9MM
10-10.5mm	IE-EJ4-14-10MM	IE-EJ5-14-10MM	IE-EJ6-14-10MM	IE-EJ8-14-10MM
11-11.5mm	IE-EJ4-14-11MM	IE-EJ5-14-11MM	IE-EJ6-14-11MM	IE-EJ8-14-11MM
12-12.5mm	IE-EJ4-14-12MM	IE-EJ5-14-12MM	IE-EJ6-14-12MM	IE-EJ8-14-12MM

Stud stands are available for 6 pair and 12 pair. 9ct WG available on request



6-6.5mm

7-7.5mm

8-8.5mm

9-9.5mm

10-10.5mm

11-11.5mm

12-12.5mm

Sterling Silver

	White	Pink	Dyed Black	Dyed Grey
5-5.5mm	IE-EJ4-5MMS	IE-EJ5-5MMS	IE-EJ6-5MMS	IE-EJ8-5MMS
6-6.5mm	IE-EJ4-6MMS	IE-EJ5-6MMS	IE-EJ6-6MMS	IE-EJ8-6MMS
7-7.5mm	IE-EJ4-7MMS	IE-EJ5-7MMS	IE-EJ6-7MMS	IE-EJ8-7MMS
8-8.5mm	IE-EJ4-8MMS	IE-EJ5-8MMS	IE-EJ6-8MMS	IE-EJ8-8MMS
8.5-9mm	IE-EJ4-9MMS	IE-EJ5-9MMS	IE-EJ6-9MMS	IE-EJ8-9MMS
9.5-10mm	IE-EJ4-10MMS	IE-EJ5-10MMS	IE-EJ6-10MMS	IE-EJ8-10MMS

9ct YG

	White	Pink	Dyed Black	Dyed Grey
5-5.5mm	IE-EJ4-9R-5MM	IE-EJ5-9R-5MM	IE-EJ6-9R-5MM	IE-EJ8-9R-5MM
6-6.5mm	IE-EJ4-9R-6MM	IE-EJ5-9R-6MM	IE-EJ6-9R-6MM	IE-EJ8-9R-6MM
7-7.5mm	IE-EJ4-9R	IE-EJ5-9R	IE-EJ6-9R	IE-EJ8-9R
8-8.5mm	IE-EJ4-8MM	IE-EJ5-8MM	IE-EJ6-8MM	IE-EJ8-8MM
8.5-9mm	IE-EJ4-9MM	IE-EJ5-9MM	IE-EJ6-9MM	IE-EJ8-9MM
9.5-10mm	IE-EJ4-10MM	IE-EJ5-10MM	IE-EJ6-10MM	IE-EJ8-10MM

Stud stands are available for 6 pair and 12 pair. 9ct WG available on request



5-5.5mm

6-6.5mm

7-7.5mm

8-8.5mm

8.5-9mm

9.5-10mm

Freshwater Pearl Drop Shepherd Hook Earrings



Sterling Silver

	White	Pink	Dyed Black	Dyed Grey
7.5-8mm	IP19WSS	IP19PSS	IP19BSS	IP19GSS
9-9.5mm	IP74WSS	IP74PSS	IP74BSS	IP74GSS
10-10.5mm	IP75WSS	IP75PSS	IP75BSS	IP75GSS

9ct YG

	White	Pink	Dyed Black	Dyed Grey
7.5-8mm	IP19WYG	IP19PYG	IP19BYG	IP19GYG
9-9.5mm	IP74WYG	IP74PYG	IP74BYG	IP74GYG
10-10.5mm	IP75WYG	IP75PYG	IP75BYG	IP75GYG

9ct WG

	White	Pink	Dyed Black	Dyed Grey
7.5-8mm	IP19WWG	IP19PWG	IP19BWG	IP19GWG
9-9.5mm	IP74WWG	IP74PWG	IP74BWG	IP74GWG
10-10.5mm	IP75WWG	IP75PWG	IP75BWG	IP75GWG

9ct RG

	White	Pink	Dyed Black	Dyed Grey
7.5-8mm	IP19WRG	IP19PRG	IP19BRG	IP19GRG
9-9.5mm	IP74WRG	IP74PRG	IP74BRG	IP74GRG
10-10.5mm	IP75WRG	IP75PRG	IP75BRG	IP75GRG

6 pair shepherd hook stands are available



IP19WRG



IP19BWG



IP19GYG



IP74WYG

Freshwater Pearl Drop Pendants & Chains



*Chains for display purposes only

Sterling Silver

	White	Pink	Dyed Black	Dyed Grey
7.5-8mm	IP22WSS	IP22PSS	IP22BSS	IP22GSS
9-9.5mm	IP23WSS	IP23PSS	IP23BSS	IP23GSS
10-10.5mm	IP24WSS	IP24PSS	IP24BSS	IP24GSS

9ct YG

	White	Pink	Dyed Black	Dyed Grey
7.5-8mm	IP22WYG	IP22PYG	IP22BYG	IP22GYG
9-9.5mm	IP23WYG	IP23PYG	IP23BYG	IP23GYG
10-10.5mm	IP24WYG	IP24PYG	IP24BYG	IP24GYG

9ct WG

	White	Pink	Dyed Black	Dyed Grey
7.5-8mm	IP22WWG	IP22PWG	IP22BWG	IP22GWG
9-9.5mm	IP23WWG	IP23PWG	IP23BWG	IP23GWG
10-10.5mm	IP24WWG	IP24PWG	IP24BWG	IP24GWG

9ct RG

	White	Pink	Dyed Black	Dyed Grey
7.5-8mm	IP22WRG	IP22PRG	IP22BRG	IP22GRG
9-9.5mm	IP23WRG	IP23PRG	IP23BRG	IP23GRG
10-10.5mm	IP24WRG	IP24PRG	IP24BRG	IP24GRG

6 piece pendant stands are available



IPCHAIN

S/S rhodium plated box chain
45cm +5cm ext.



IPCHAIN-60CM

S/S rhodium plating cable chain
60cm + ext. 8cm



IPCHAIN-RGP

S/S 14ct rg plated cable chain
45cm +3cm ext.



IPCD39-9Y

9ct yg curb chain 45cm

Freshwater Pearl Drop Hooks & Pendants Stands



STAND 7
Sterling Silver Shepherd Hook Stand
(L-R) IP19WSS, IP19PSS, IP19GSS, IP74WSS,
IP74PSS, IP74BSS



STAND 10
Sterling Silver Pendant Stand
(L-R) IP22WSS, IP22PSS, IP22GSS/BSS, IP23WSS,
IP23PSS, IP23BSS



STAND 8
9ct Shepherd Hook Stand
(L-R) IP19WYG, IP19PYG, IP19BYG/GYG, IP74WYG/WWG,



STAND 13
9ct Pendant Stand
(L-R) IP23WYG, IP23PYG, IP23GWG/BWG, IP24WYG,



STAND 9
9ct Shepherd Hook Stand
(L-R) IP74WYG, IP74PYG, IP74GWG, IP75WYG,
IP75PYG, IP75BWG



STAND 18
9ct Pendant Stand
(L-R) IP22WYG, IP22PWG, IP23GYG, IP24WWG,
IP24PYG, IP24BWG

OPALS

Opal is one of the most unique gem stones in the world and is classified at the National Gemstone of Australia.



BLACK OPAL

- Black opal a natural solid stone and is the rarest and most valuable of all opals and is found in Lightning Ridge, Australia
- Black Opal is distinguished from other opals due to its dark body tone and with a black or dark grey base with brilliant colours on the top ranging from blue to red, red being the most valuable
- The darker the body of the opal the more valuable the stone may be.
- Black Opals were first discovered at Lightning Ridge in 1903. Lightning Ridge is famous for the black opal and hundreds of millions of dollars worth of black opals have been found there.
- In 2008, the black opal was named as the 'natural gemstone emblem' for New South Wales.

BOULDER OPAL

- Solid Boulder Opal is sourced from areas in Central Outback Queensland and are the second most valuable type of opal
- Boulder opals are easily distinguished by their layer of solid brown ironstone left on the back of the stone, they are found in cavities of ironstone and sandstone boulders which are millions of years old.
- Due to the dark backing provided by the ironstone, boulder opals generally have a dark body tone which leads to a vibrancy of colour similar to that found in black opals.
- They are often cut in freeform shape to highlight their individual beauty.

WHITE OPAL

- Solid White Opals are distinguished by their pale white or light body tone, also known as "light opal"
- White opals are found in South Australia in the major opal fields of Coober Pedy, Andamooka, and Mintabie
- White opals are much more plentiful and common than other kinds of opal like black opal and boulder opal.
- White opals are the least valuable form of solid opal, this is due to the lack of darkness in the stone



OE002-SS

S/S white solid Opal 4mm stud earrings



OP001-SS

S/S white solid Opal 6mm & white 4mm FWP pendant



OR003-SS

S/S yg white solid Opal 6mm & 2x4mm FWP ring



OE002-9Y

9ct yg white solid Opal 4mm stud earrings



OP001-9Y

9ct yg white solid Opal 6mm & 4mm white FWP pendant



OR003-9Y

9ct yg white solid Opal 6mm & 4mm white FWP ring



OE001-9Y

9ct yg white solid opal 7x5 with 4mm white FWP hook earrings (available in sterling silver)



OP002-SS

S/S white solid Opal 6mm with 9mm white drop FWP pendant



OP002-9YG

9ct yg white solid Opal 6mm with 9mm white drop FWP pendant



LUXURY PEARL & OPAL JEWELLERY

IKECHO

A U S T R A L I A

www.ikecho.com.au | enquiries@ikecho.com.au
(02)92660636 | 263SussexSt.SydneyNSW2000

All product photography is for illustration purposes only.
Depiction of photographed products will vary slightly to real life.